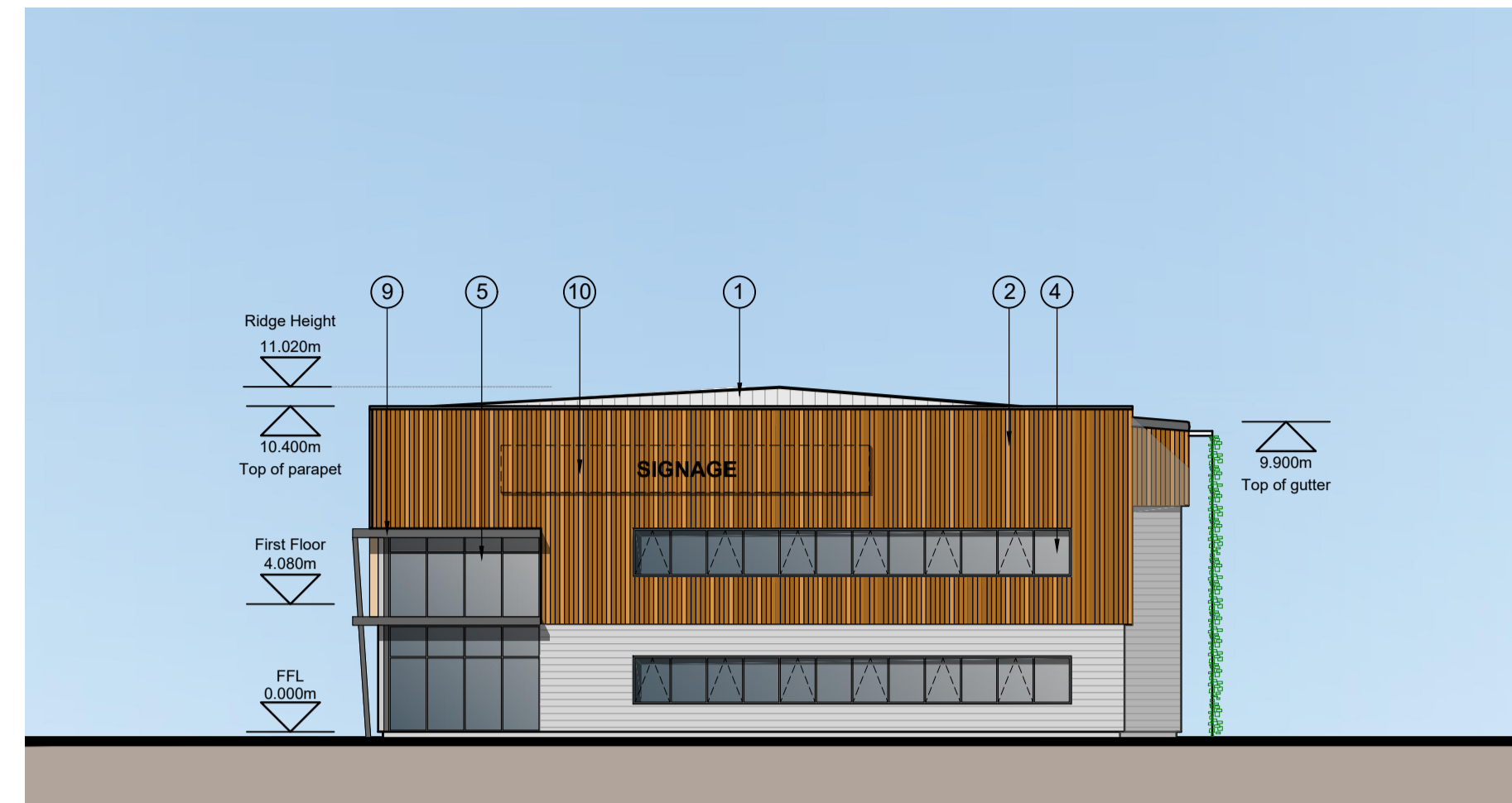
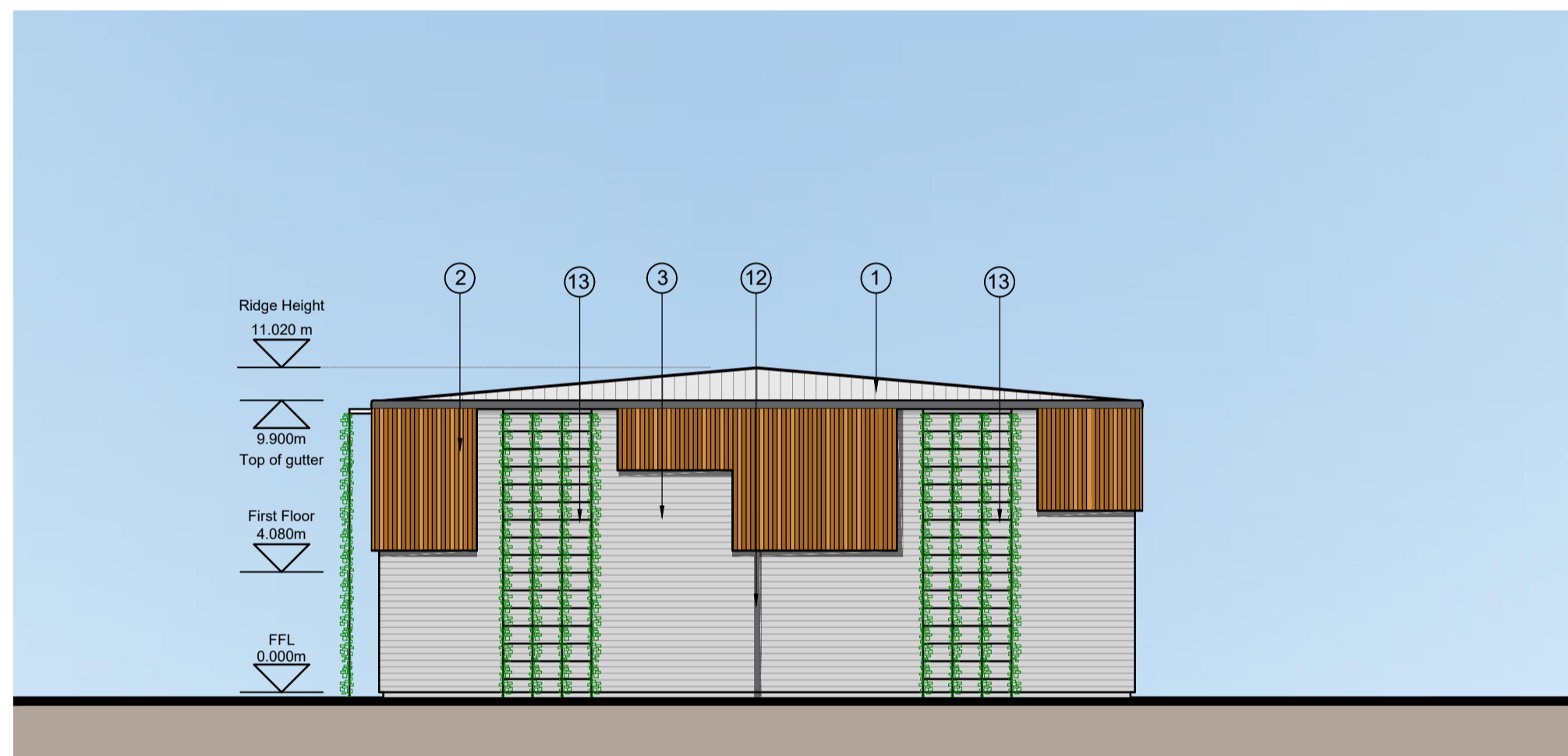
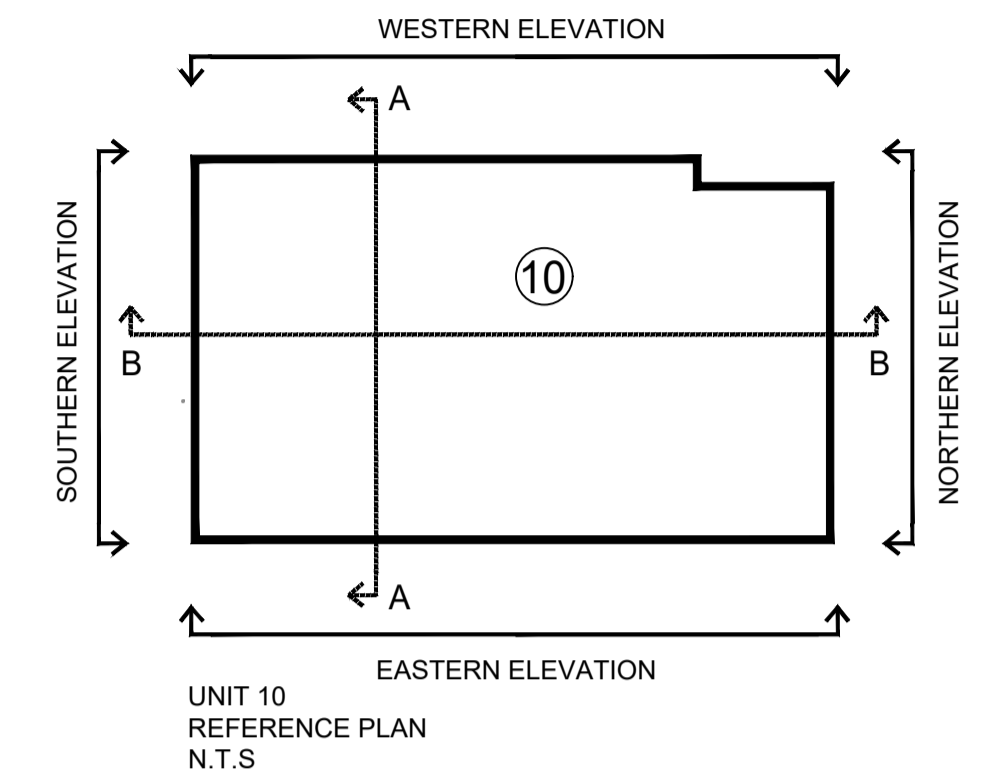


EASTERN ELEVATION



NORTHERN ELEVATION



SOUTHERN ELEVATION

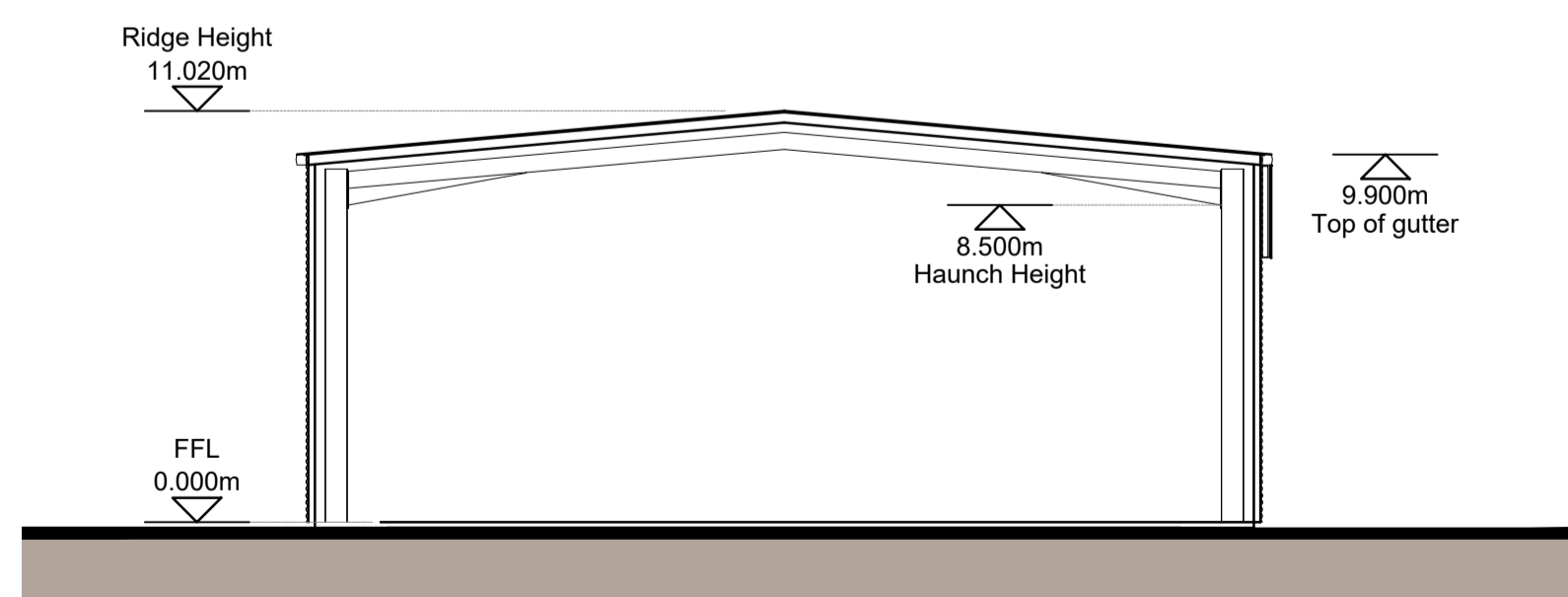


WESTERN ELEVATION

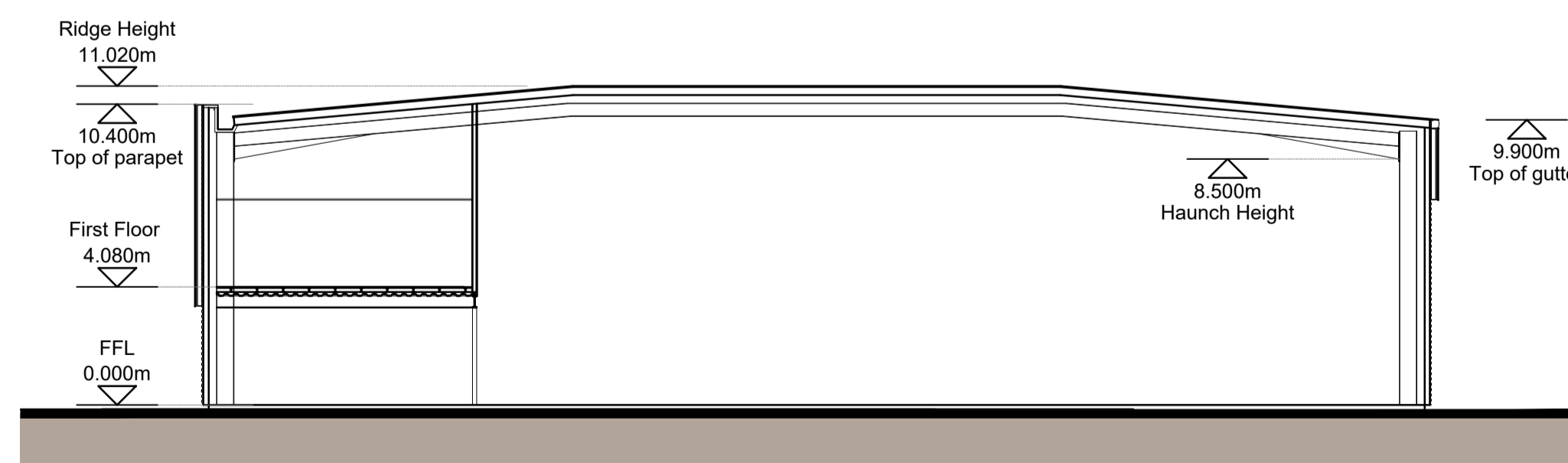
MATERIALS KEY

- ① PROFILED ROOF CLADDING (GOOSEWING GREY RAL 7038)
- ② SIBERIAN LARCH CLADDING
- ③ HORIZONTAL ARC PROFILE CLADDING (METALLIC SILVER RAL 9006)
- ④ ALUMINIUM FRAMED WINDOWS (ANTHRACITE RAL 7016)
- ⑤ ALUMINIUM FRAMED ENTRANCE DOORS AND FULL HEIGHT GLAZING (ANTHRACITE RAL 7016)
- ⑥ LOADING BAY DOORS (ANTHRACITE RAL 7016)
- ⑦ STEEL PERSONNEL DOORS (ANTHRACITE RAL 7016)
- ⑧ STEEL BOLLARD (GREEN RAL 6018)
- ⑨ MAIN ENTRANCE BRISE-SEIL
- ⑩ SIGNAGE ZONE, INDICATIVE
- ⑪ BACKLIT ILLUMINATED ALUMINIUM UNIT NUMERAL (RAL 6018 FACE)
- ⑫ ALUMINIUM RAINWATER GOODS (ANTHRACITE RAL 7016)
- ⑬ GREEN WALL

193



UNIT 10 SECTION AA



UNIT 10 SECTION BB

Client:
HE2 READING 1 GP LTD (LONDON)



Project:
HEADLEY ROAD EAST
WOODLEY

32 Warren Yard,
Warren Park,
Milton Keynes,
MK12 5NW
01908 305 246
info@prc-group.com
www.prc-group.com

Drawing Title:
UNIT 10
PROPOSED ELEVATIONS
& SECTION

Scale @ A1: 1:200
Checked by: JR
Date: SEPT 21

Job No: 11359
Stage: PL 124
Drawing No: A

Issue Status:
 Construction Preliminary
 Information Approval
 Tender

Architecture
 Planning
 Master Planning
 Urban Design
 Interiors
 Landscape
Offices
 Woking
 London
 Milton Keynes
 Warsaw

This page is intentionally left blank